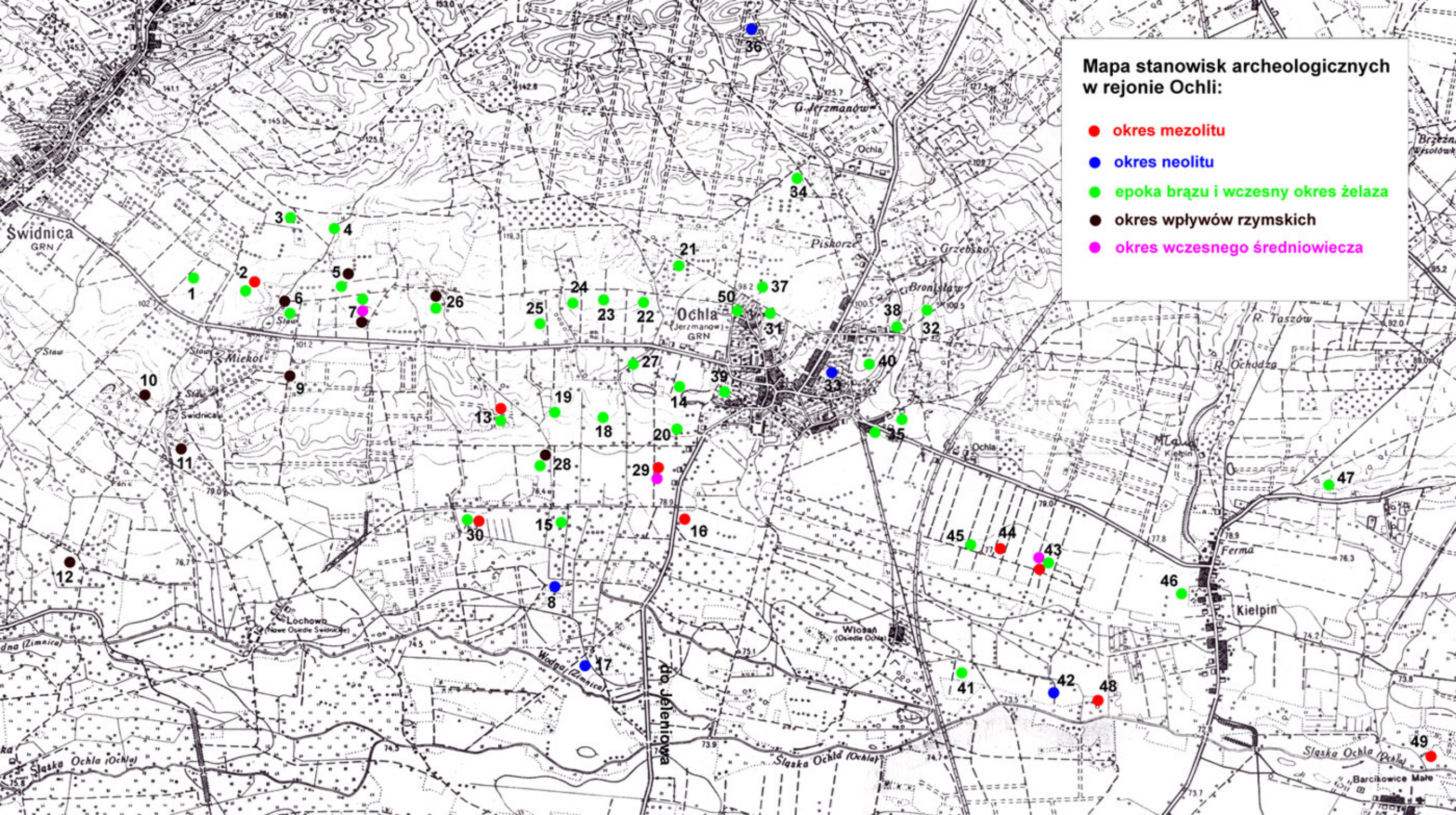
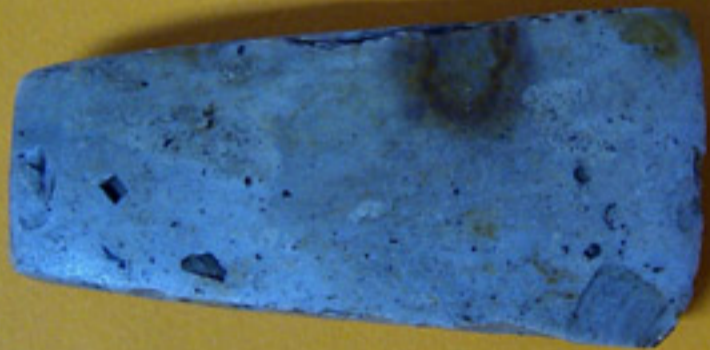


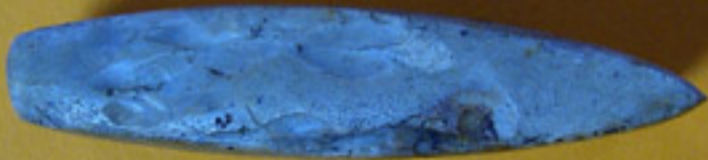
**Mapa stanowisk archeologicznych  
w rejonie Ochli:**

- okres mezolitu
- okres neolitu
- epoka brązu i wczesny okres żelaza
- okres wpływów rzymskich
- okres wczesnego średniowiecza











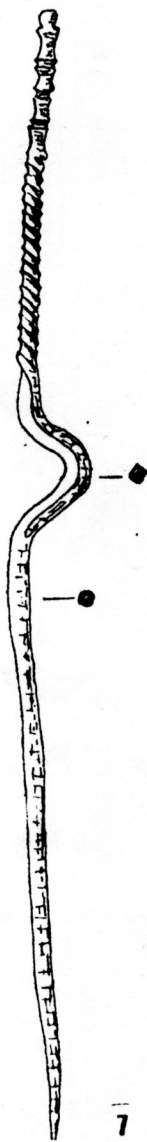
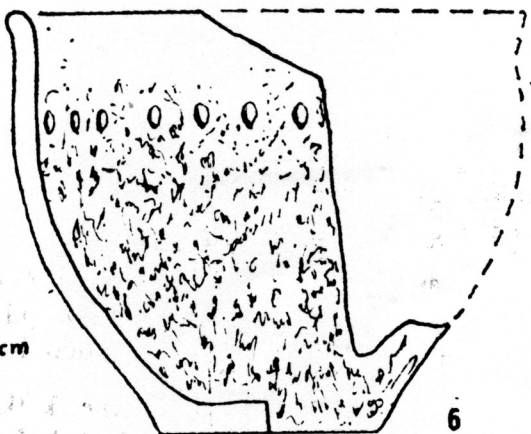
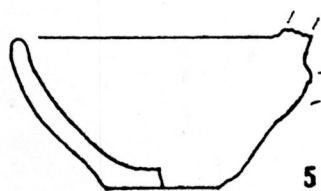
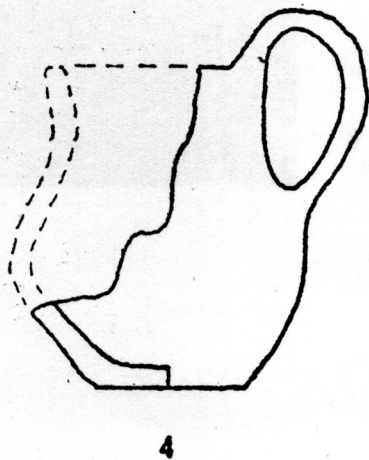
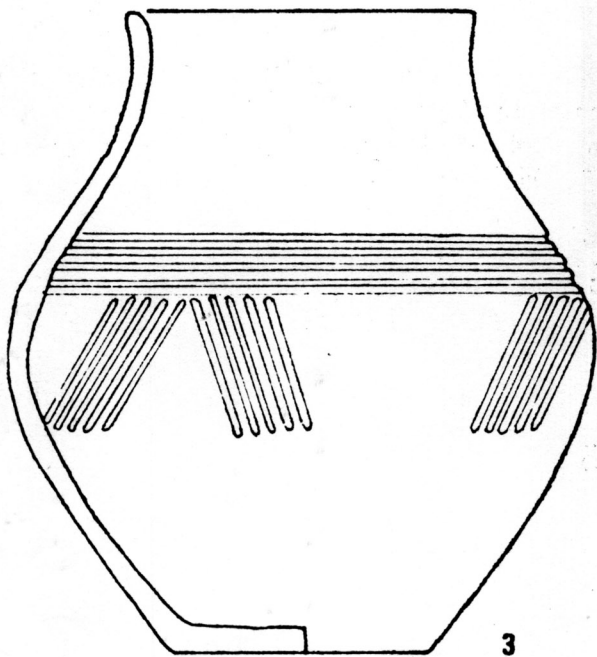
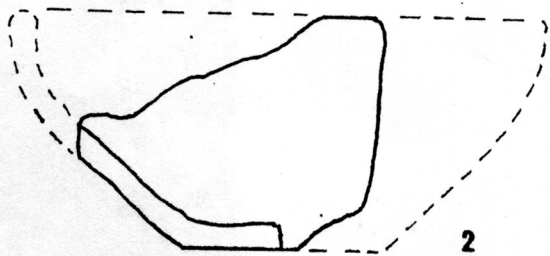
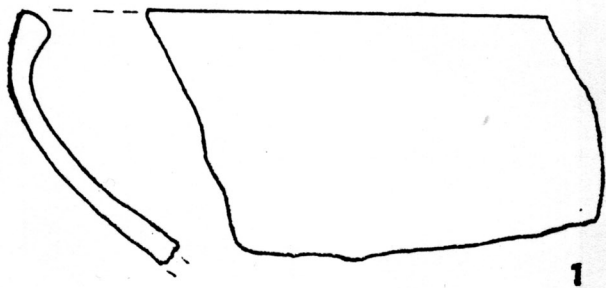




294

Chalkstone  
31





0 1 2 3 cm  
1-3, 5

0 2 4 6 cm  
4, 6-7





























1 cm

2

3

4

metric

5

97

6



1 1m 2

3 4

metric 5

6 7



1 cm

2

3

metric

4

metric

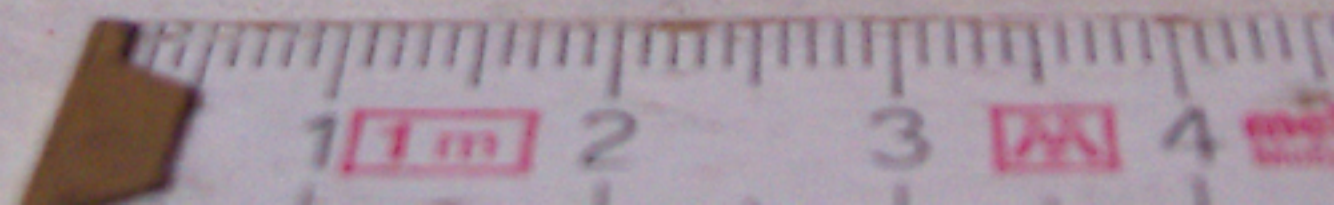
5

97

1.34

6

10















1 2 3 4 5 6 7  
100 200 300 400 500 600 700  
100 200 300 400 500 600 700



1 1m

2

3

metric

4

McEgerton

5

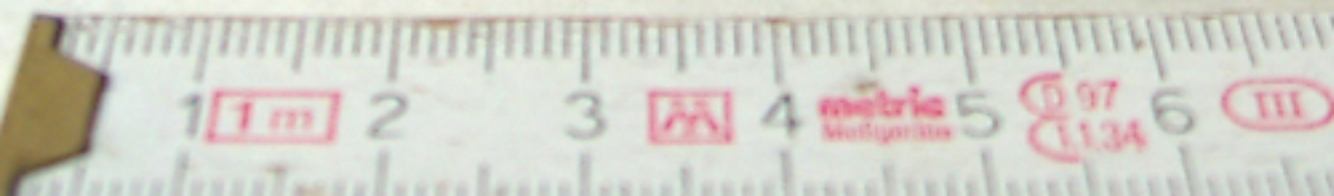
6 97

1.134

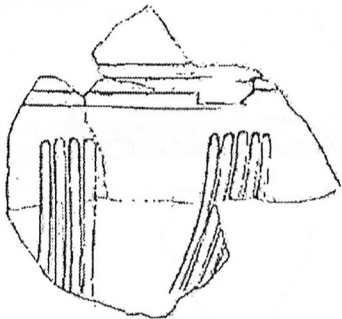
6

III



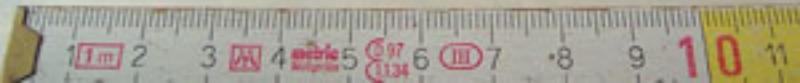




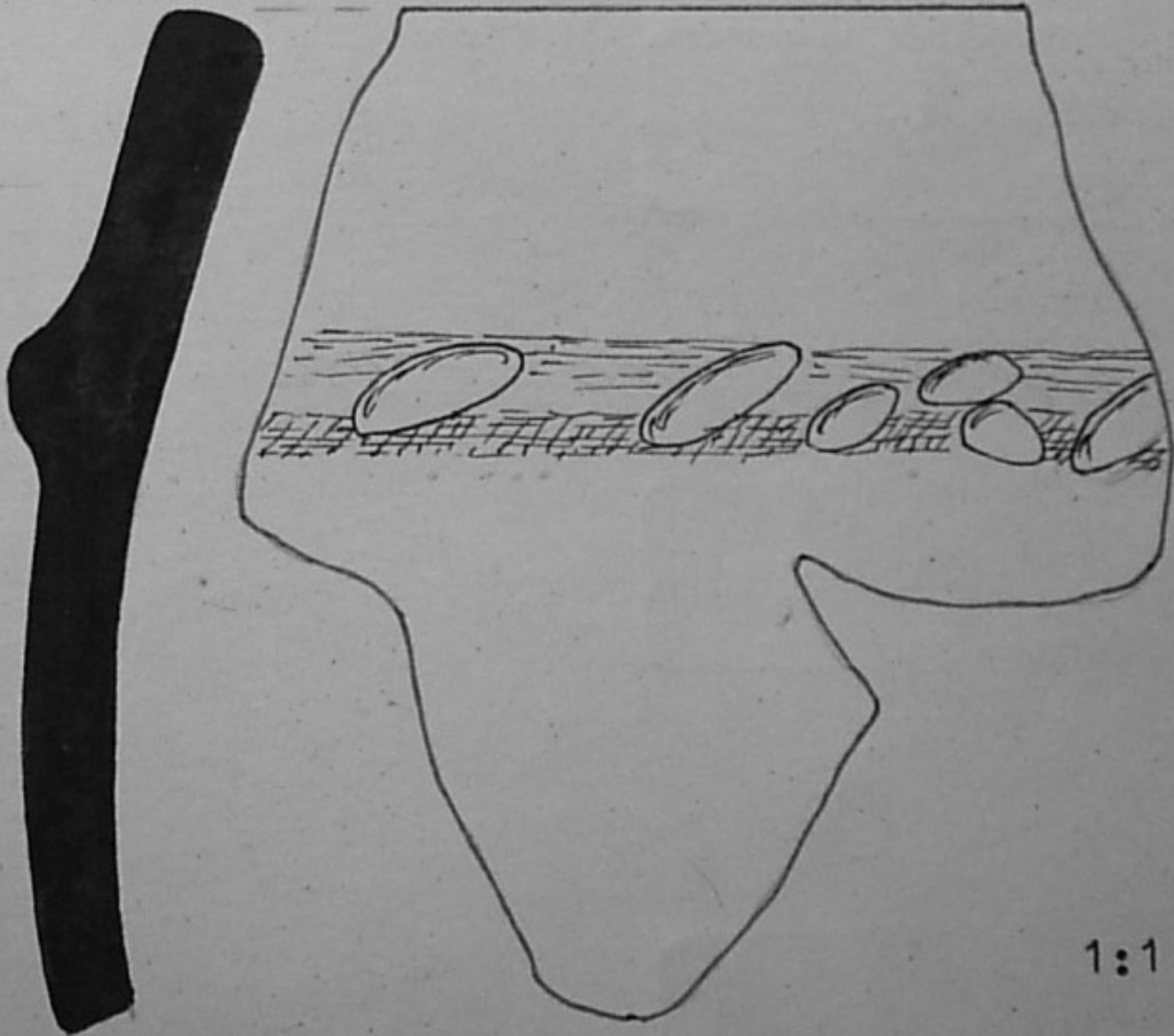




1 2 3 4 5 6 7 8 9







1:1

